

# Country Floors

GROUND FLOOR PLAN



FIRST FLOOR PLAN



Plot Size (In sq.yds)	Floor	Built-up Area (In sq.ft)	Lawn/Terrace (In sq.ft)	Total Usable (In sq.ft)
495 (4 BHK + Utility)	GF	3560	1814	5374
	FF	2873	607	3480
	SF	2833	607	3440

1 SQM = 1.196 SYD. • 1SQM = 10.764 SFT.  
\* AREAS ARE SUBJECT TO CHANGE

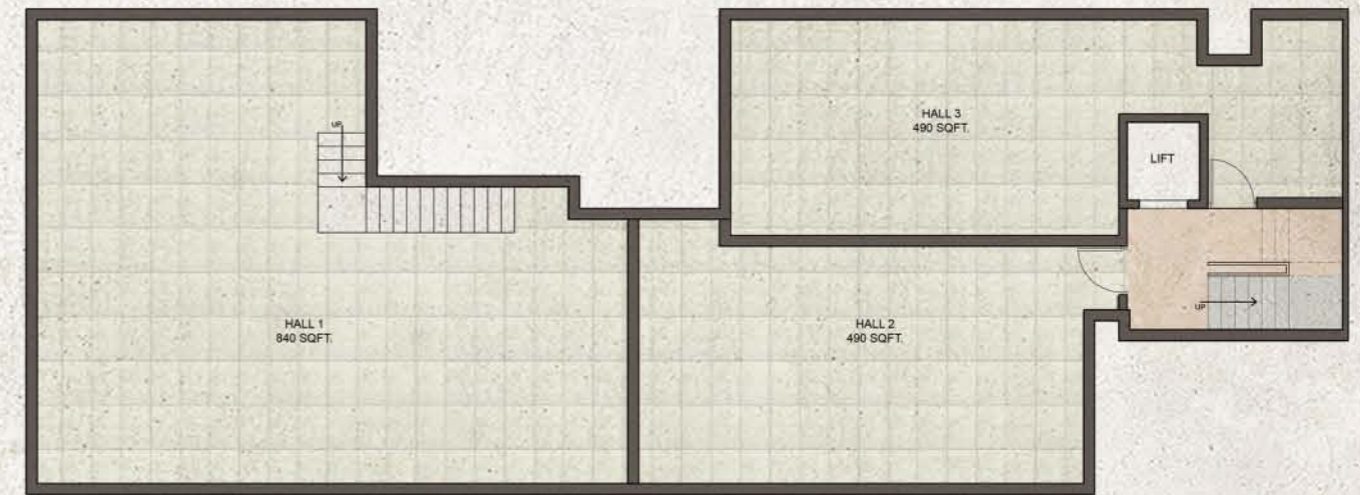


Country Floors

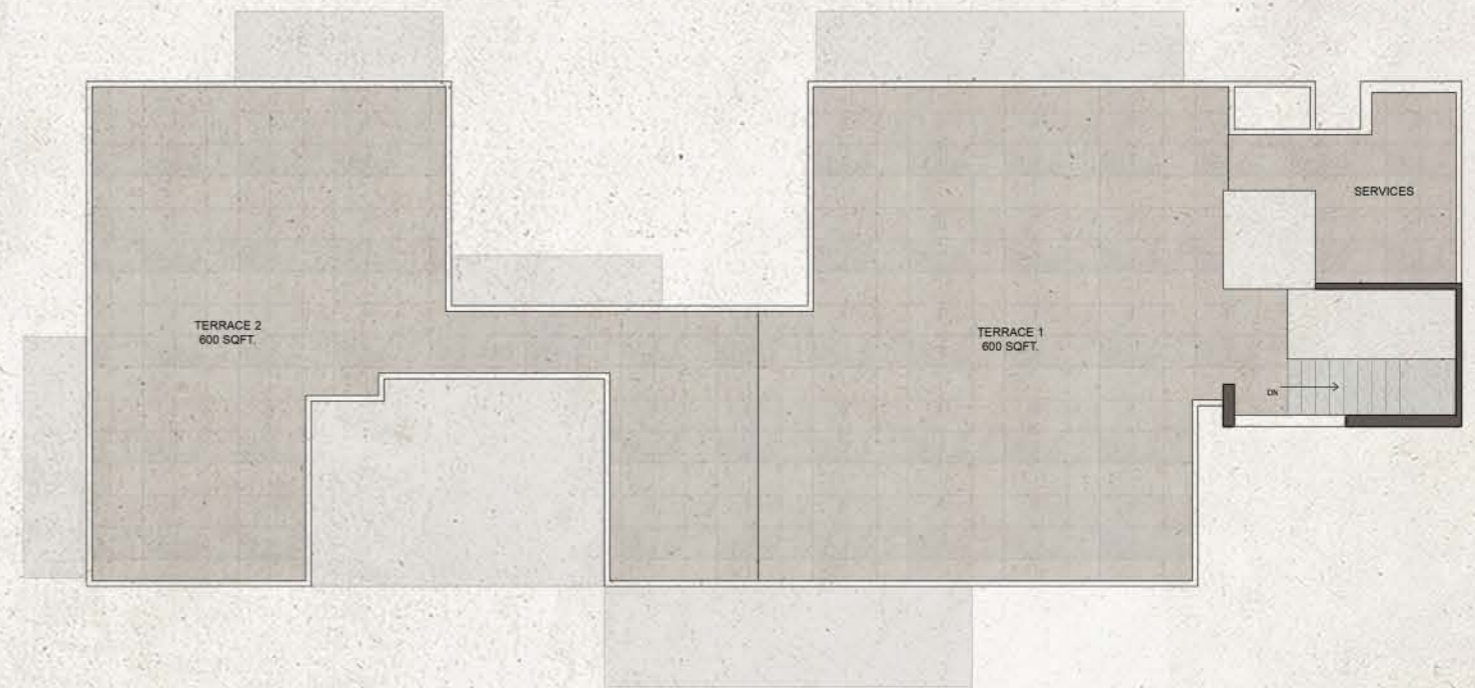
SECOND FLOOR PLAN



BASEMENT PLAN



TERRACE PLAN



Plot Size (In sq.yds)	Floor	Built-up Area (In sq.ft)	Lawn/Terrace (In sq.ft)	Total Usable (In sq.ft)
495 (4 BHK + Utility)	GF	3560	1814	5374
	FF	2873	607	3480
	SF	2833	607	3440

1 SQM = 1.196 SYD. • 1SQM = 10.764 SFT.  
\* AREAS ARE SUBJECT TO CHANGE