

Country Floors

GROUND FLOOR PLAN



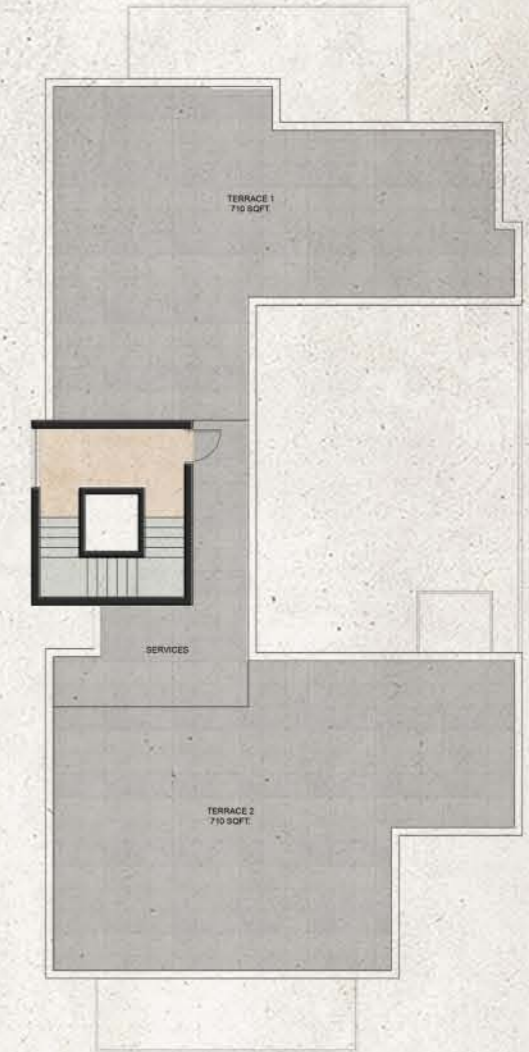
FIRST / SECOND FLOOR PLAN



BASEMENT PLAN



TERRACE PLAN



Plot Size (In sq.yds)	Floor	Built-up Area (In sq.ft)	Lawn/Terrace (In sq.ft)	Total Usable (In sq.ft)
579 (4 BHK + Utility)	GF	3712	1997	5709
	FF	2979	714	3693
	SF	2979	714	3693

1 SQM = 1.196 SYD. • 1SQM = 10.764 SFT.
* AREAS ARE SUBJECT TO CHANGE